



Rx-University Software Packages and Modules

Rx-University is modular and scalable, so it can be customized to suit your lab's unique needs now and adapted as you grow. Get the details below to choose the options that are right for your lab.

Enhance productivity. Maximize efficiency.

Rx-University Lab Functionality includes:



Lab Management Software Packages for USA/Canada Market

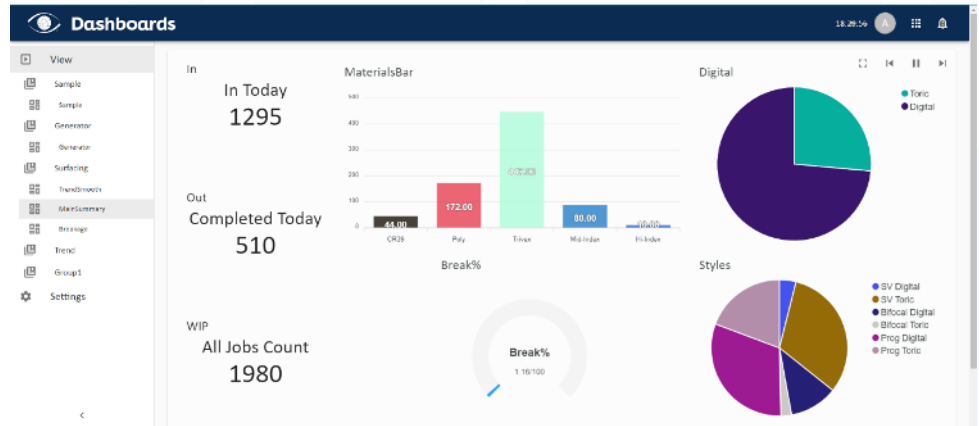
● Included ○ Option Available N/A Not Available

Feature/Module	Rx-University® Microlab max. 100 jobs/day	Rx-University® Easy max. 100 jobs/day	Rx-University® 360
Rx Orders	●	●	●
Lab Equipment Interfaces	●	●	●
Lens Surfacing & Finishing Calculations	●	●	●
Digital Design Calculator Interfaces	●	●	●
Rx-Xplore (Canned Reports)	●	●	●
Job Tracking, Job Flow Control, and Routing	N/A	●	●
Pricing, Invoicing, and AR Statements	N/A	●	●
Lens Inventory Management	N/A	●	●
Frame Inventory Management	N/A	●	●
Rx-Xplore Designer (Report Editor + Dashboards + API tools)	N/A	○	●
Rx-Transfer (API Integration Tools)	N/A	○	●
Vision Web interface	●	●	●
Eyefinity Interface	N/A	○	○
Rx-PMS (Direct Electronic Order Interface)	N/A	○	○
Rx-Site (Remote Order Entry Client)	N/A	○	○
Included User Licenses	5	10	15
Volume Limit (Jobs per day)	100 JPD	100 JPD	No Limit

Rx-Universe in Action

Just because a lab management software is robust and powerful, doesn't mean it has to be difficult to use.

Rx-Universe's modern user interface and customizable dashboards streamline your process and keep things moving.



Software Requirements

Rx-Universe operates in a Windows Server or Windows PC Environment and is compliant with VC DCS TCP/IP and Serial Interface Protocols.

Please consult with us for specific hardware recommendations.

Request a Demo

We'd love to show you all the ways Rx-Universe can help you increase efficiency and enhance quality.

[Request a demo](#) on our website or give us a call at +1 506-857-1707.



rx-universe.com

sales@rx-universe.com